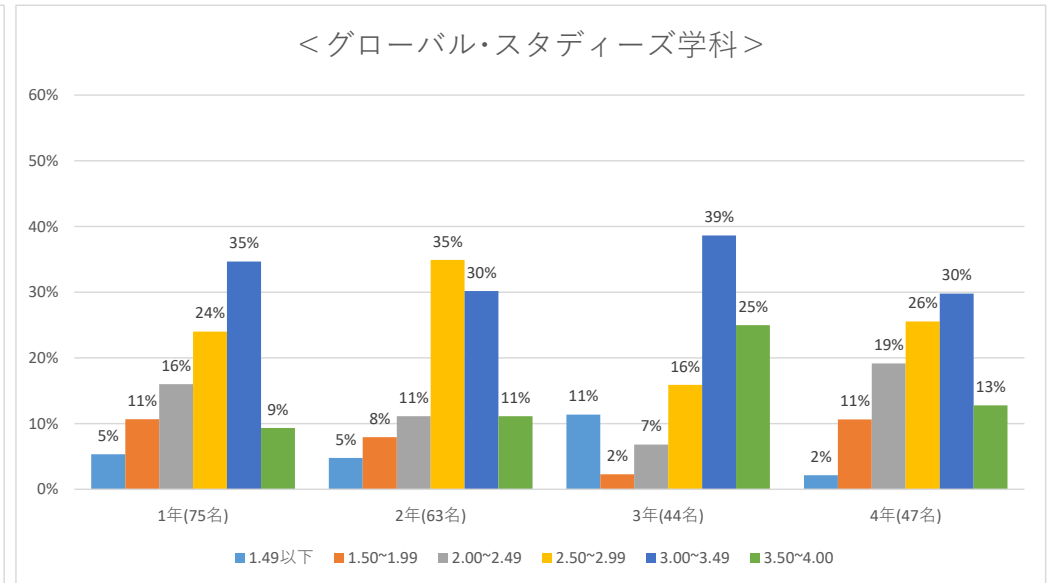
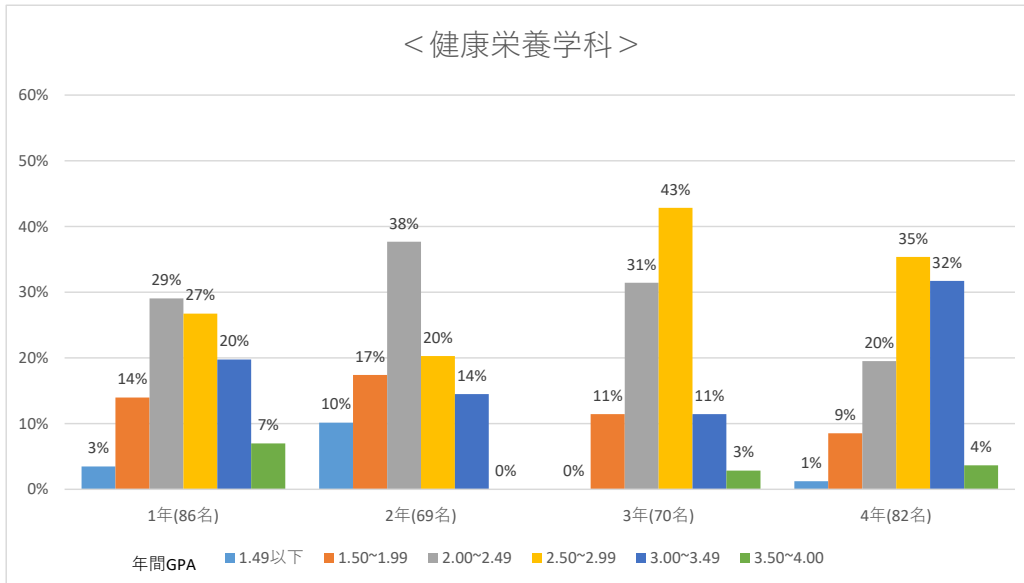
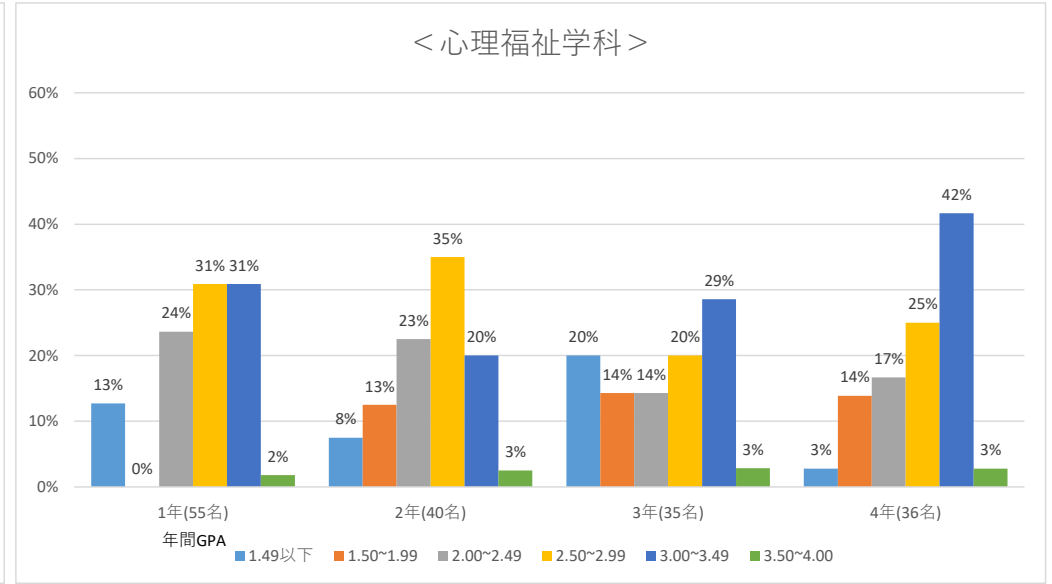
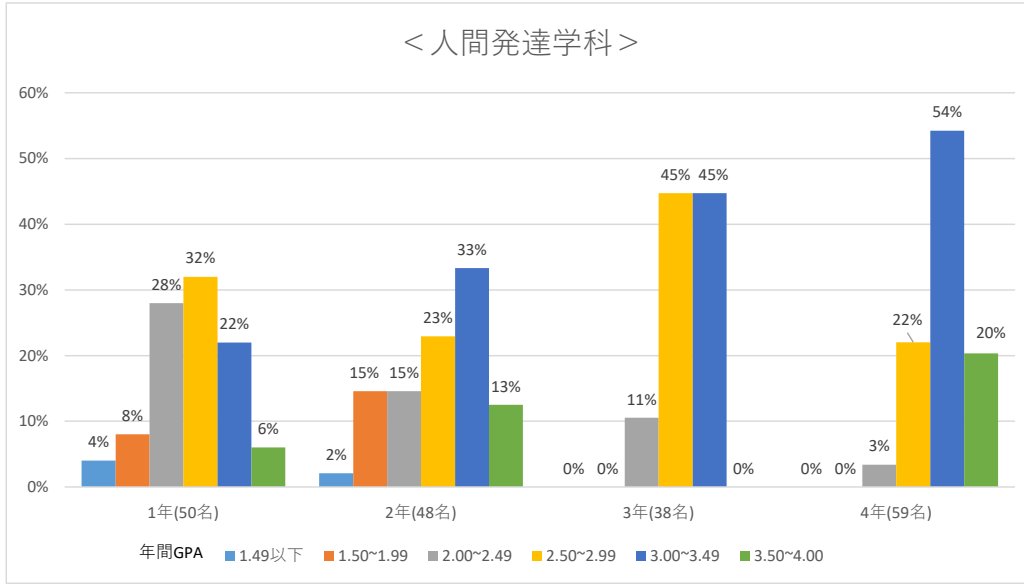


# 2019年度 年間GPA分布図



●GPAの算出方法

$$GPA = \frac{(\text{評価}^{\text{S}} \text{修得単位数} \times 4) + (\text{評価}^{\text{A}} \text{修得単位数} \times 3) + (\text{評価}^{\text{B}} \text{修得単位数} \times 2) + (\text{評価}^{\text{C}} \text{修得単位数} \times 1)}{\text{履修登録単位数の合計}}$$

※GPA除外科目は計算対象から除く